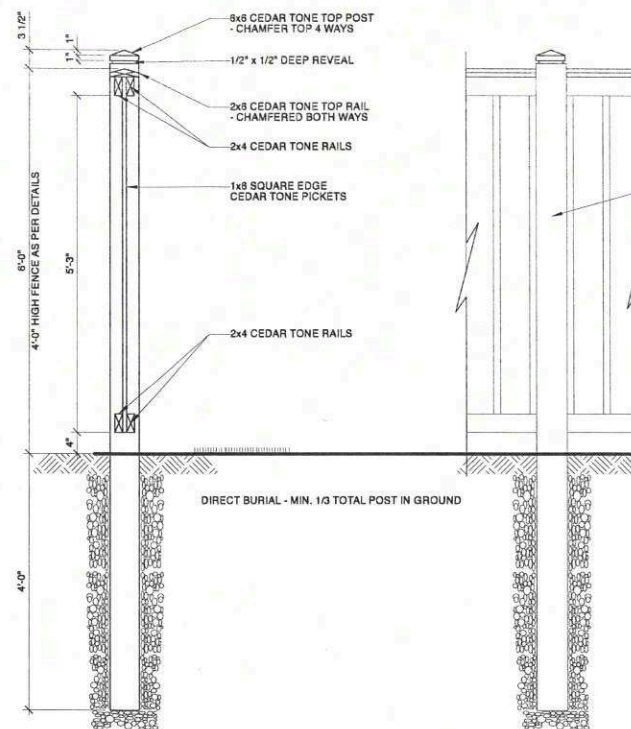
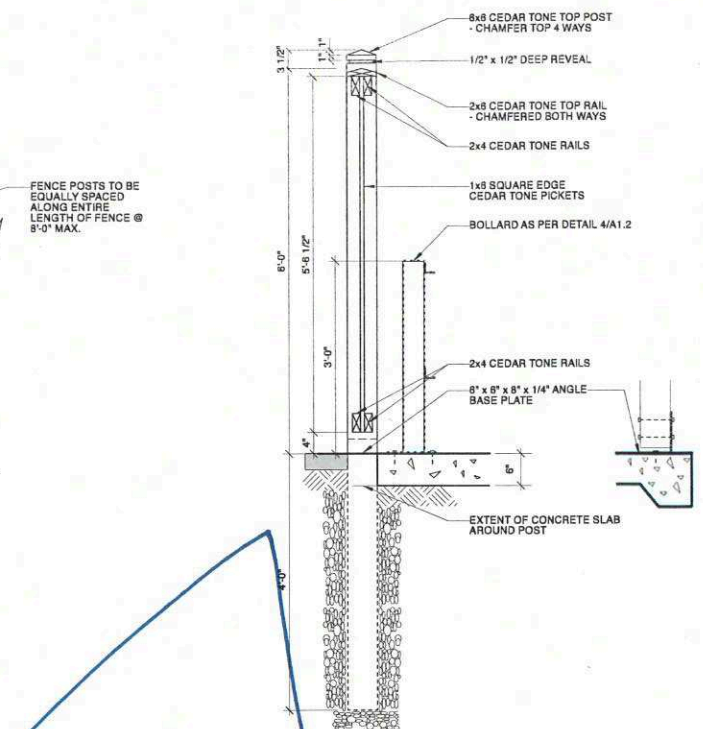


***Please note: Approved plans are subject to any amendments or conditions made by Community Committee.**

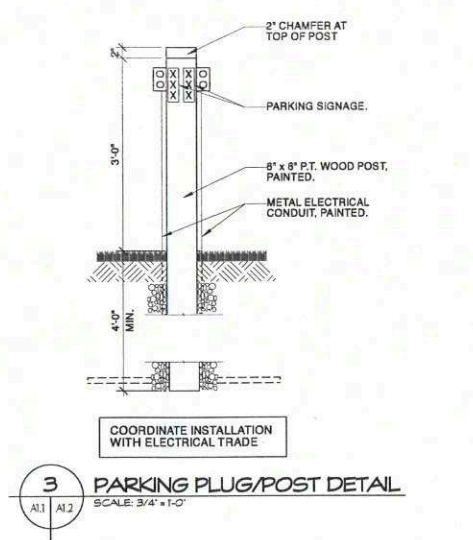
ALL WOOD TO BE FULL DIMENSION SPF, NO CHECKS OR WANING.



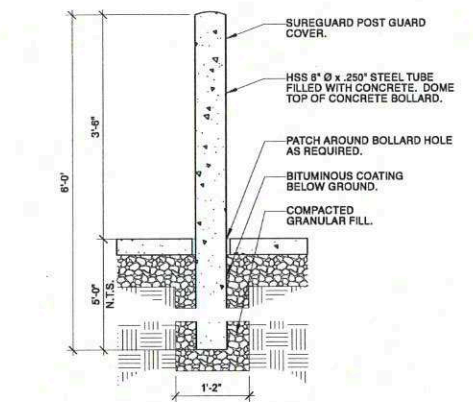
1 FENCE DETAILS
SCALE 3/4" = 1'-0"



2 GARBAGE ENCLOSURE DETAILS
SCALE 3/4" = 1'-0"



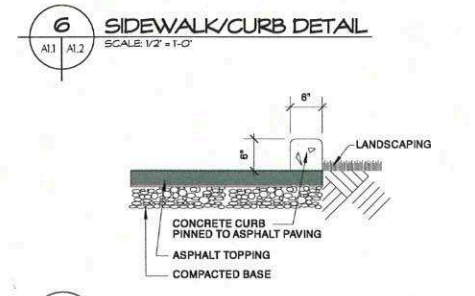
3 PARKING PLUG/POST DETAIL
SCALE 3/4" = 1'-0"



4 TYPICAL BOLLARD DETAIL
SCALE 3/4" = 1'-0"



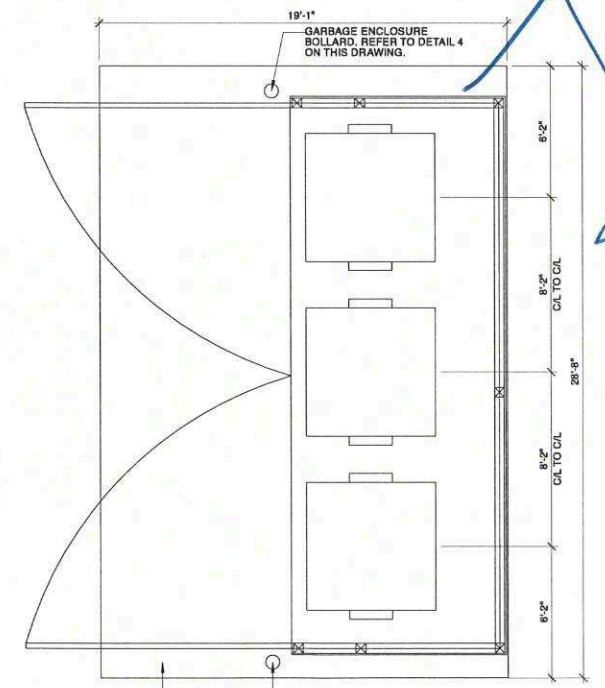
5 PRECAST CURB DETAIL
SCALE 1/2" = 1'-0"



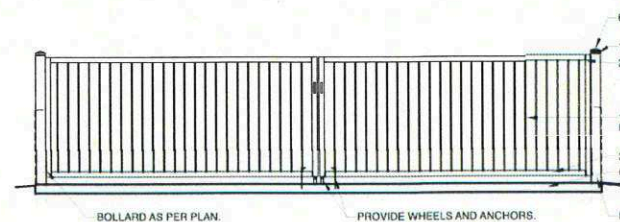
6 SIDEWALK/CURB DETAIL
SCALE 1/2" = 1'-0"



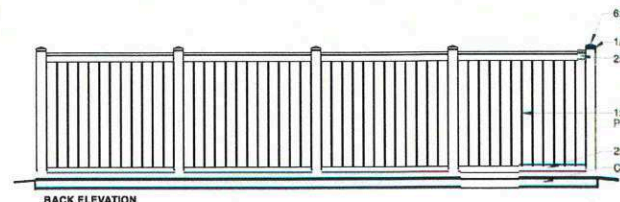
7 LANDSCAPE/CURB DETAIL
SCALE 1/2" = 1'-0"



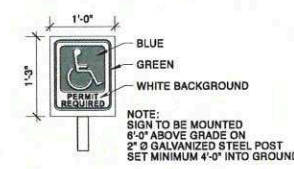
9 GARBAGE ENCLOSURE PLAN
SCALE 1/4" = 1'-0"



BOLLARD AS PER PLAN.



BACK ELEVATION



8 BARRIER FREE SIGNAGE DETAIL
SCALE 3/4" = 1'-0"

Handwritten note: 8 Foot

ALL DRAWINGS AND SPECIFICATIONS ARE THE PROPERTY OF THE CONSULTANT. NO REPRODUCTIONS MAY BE MADE WITHOUT THE CONSENT OF THE CONSULTANT AND ALL REPRODUCTIONS MUST BEAR THE NAME OF THE CONSULTANT. THE CONTRACTOR SHALL VERIFY ALL DIMENSIONS, SIZES AND LEVELS NOTED ON THE DRAWINGS WITH THE CONDITIONS ON SITE AND SHALL BE RESPONSIBLE FOR REPORTING ANY ERRORS OR OMISSIONS TO THE ENGINEER FOR ADJUSTMENTS. THIS DRAWING SHALL NOT BE SCALED.

Handwritten notes and stamps:
page 2 of 5
Zoning Agreement
DAV 21-195378
12.15.2022
DEC 21/22
12/21/2022

Revisions

Date	Revision
April 5, 2022	ISSUED FOR CONSTRUCTION

KNH
K.H. SNIWICKY & ASSOCIATES
STRUCTURAL ENGINEERING CONSULTANTS

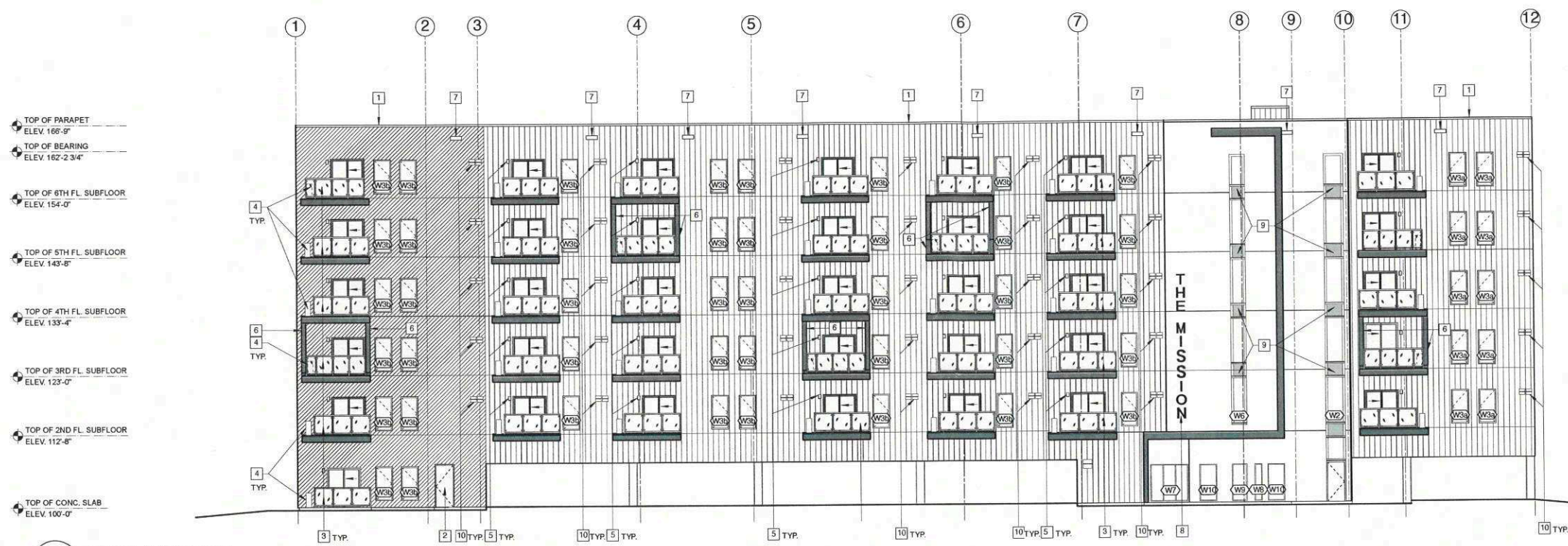
Northern Sky Architecture Inc.

193-128 James Avenue
Winnipeg, Manitoba, Canada
R3B 2K4
905.278.8881 ext. 22
Fax: 204.943.8786
204.943.8787

Stamp	Stamp
Project	Foresight Development Group Inc.
Project	The Mission
Project	Winnipeg, Manitoba
drawing title	SITE DETAILS
scale	as noted
date	April, 2022
project no.	21.271
reference no.	sheet A1.2
designed by	jls
drawn by	jls
reviewed by	dko
sheet	A1.2
REV.	

***Please note: Approved plans are subject to any amendments or conditions made by Community Committee.**

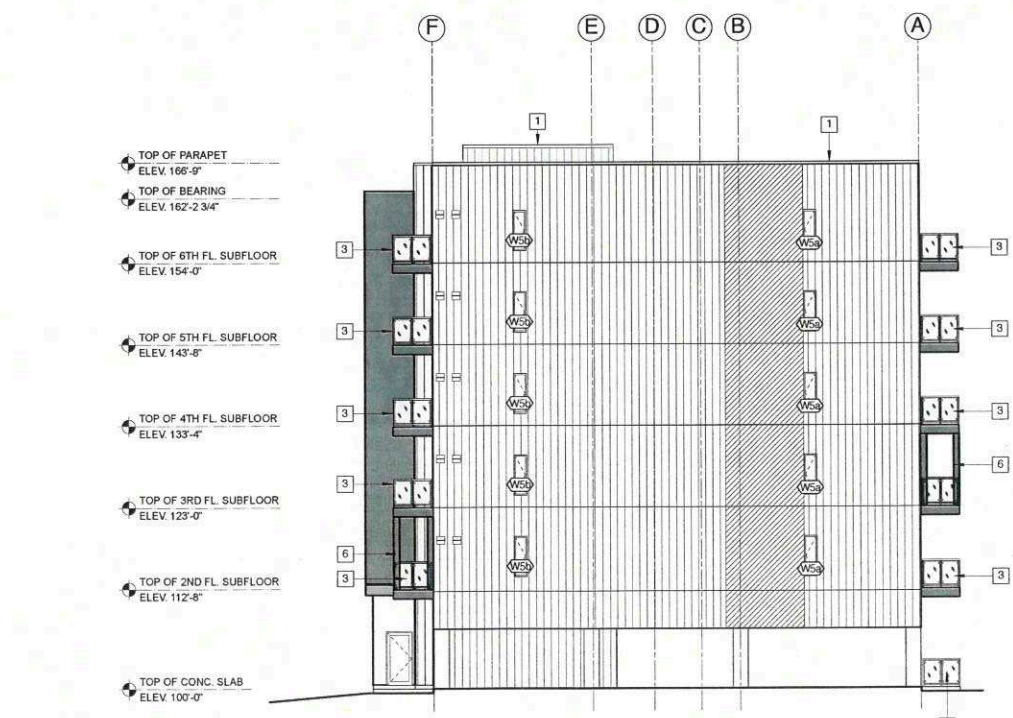
ALL DRAWINGS AND SPECIFICATIONS ARE THE PROPERTY OF THE CONSULTANT AND NO REPRODUCTIONS MAY BE MADE WITHOUT THE CONSENT OF THE CONSULTANT. THE CONTRACTOR SHALL VERIFY ALL DIMENSIONS, DATUMS AND LEVELS SHOWN ON THE DRAWINGS WITH THE CONDITIONS ON SITE AND SHALL BE RESPONSIBLE FOR REPORTING ANY ERRORS OR OMISSIONS TO THE ENGINEER FOR ADJUSTMENTS. THIS DRAWING SHALL NOT BE SCALED.



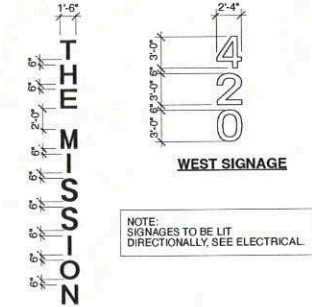
1 SOUTH ELEVATION
SCALE 3/32" = 1'-0"

- LEGEND:**
- METAL CLADDING COLOUR / PROFILE 1
 - METAL CLADDING COLOUR 1 / PROFILE 2
 - METAL CLADDING COLOUR 2 / PROFILE 2
 - METAL CLADDING COLOUR / PROFILE 3

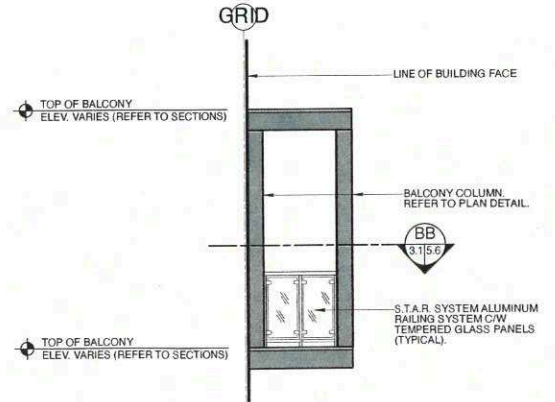
- EXTERIOR ELEVATION NOTES:**
- 1 PREFINISHED METAL PARAPET CAP FLASHING. COLOUR TO MATCH ADJACENT FINISH BELOW.
 - 2 REFER TO DOOR AND DOOR HARDWARE SCHEDULES FOR DOOR, DOOR FRAME AND DOOR HARDWARE INFORMATION. PAINT DOOR AND DOOR FRAME TO MATCH ADJACENT METAL PANEL COLOUR.
 - 3 S.T.A.R. SYSTEM ALUMINUM RAILING SYSTEM C/W TEMPERED GLASS PANELS (TYPICAL).
 - 4 SUITE MECHANICAL CONDENSING UNIT. REFER TO MECHANICAL (TYPICAL).
 - 5 EXTERIOR BALCONY LIGHTING. REFER TO ELECTRICAL (TYPICAL).
 - 6 BALCONY BUILD-OUT. REFER TO DETAIL B/A3.1.
 - 7 OVERFLOW SCUPPER. REFER TO ROOF PLANS AND SECTION DETAILS.
 - 8 SIGNAGE. REFER TO DETAIL A/A3.1.
 - 9 SPANDREL PANEL COLOUR TO MATCH WINDOW FRAME. REFER TO WINDOW SCHEDULE AND SPECIFICATIONS.
 - 10 MECHANICAL VENT COVER, SEE DETAIL S/A4.12.



2 EAST ELEVATION
SCALE 3/32" = 1'-0"



A SIGNAGE DETAILS
SCALE 1/8" = 1'-0"



SCHEDULE "A" page 3 of 5
To Zoning Agreement **DAV 21-195338** Winnipeg
By-Law No. _____
ZONING OFFICER: *ay* 12.15.2022
DIRECTOR OF PLANNING: *ay* 12/21/2022
COMMUNITY CLERK: *Amey* DEC 21/22
APPROVED FOR THE DIRECTOR OF PLANNING PROPERTY & DEVELOPMENT: *Beig* Dec 21, 2022

Revisions

Date	Revision

K/H
K/H SKANSKY & ASSOCIATES
STRUCTURAL ENGINEERING CONSULTANTS
100-122 James Avenue
Winnipeg, Manitoba, Canada
R3B 0M8
204-943-6767
204-943-6767

Northern Sky Architecture Inc.
Stamp

Project: Foresight Development Group Inc.
The Mission
Winnipeg, Manitoba

drawing title: **EXTERIOR ELEVATIONS**

scale	as noted	designed by	js
date		drawn by	bev
project no.	21.271	reviewed by	dko
reference no.		sheet	A3.1 REV.

***Please note: Approved plans are subject to any amendments or conditions made by Community Committee.**

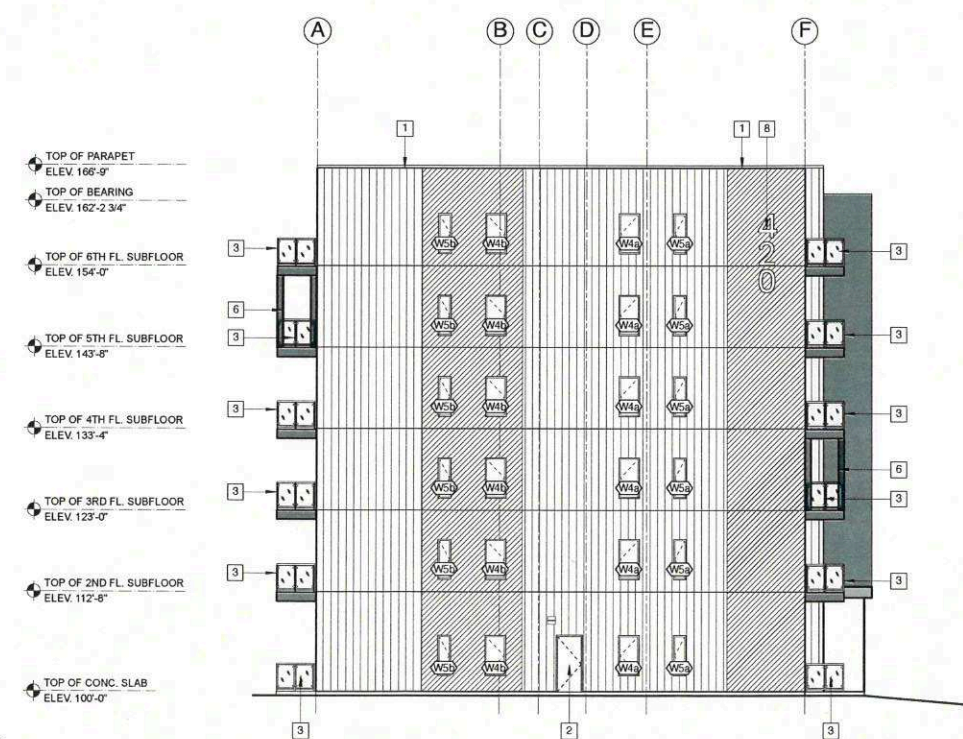
ALL DRAWINGS AND SPECIFICATIONS ARE THE PROPERTY OF THE CONSULTANT.
 NO REPRODUCTIONS MAY BE MADE WITHOUT THE CONSENT OF THE CONSULTANT AND ALL REPRODUCTIONS MUST BEAR THE NAME OF THE CONSULTANT.
 THE CONTRACTOR SHALL VERIFY ALL DIMENSIONS, DATUMS AND LEVELS NOTED ON THE DRAWING WITH THE CONDITIONS OF CONTRACT AND SHALL BE RESPONSIBLE FOR REPORTING ANY ERRORS OR OMISSIONS TO THE ENGINEER FOR ADJUSTMENTS.
 THIS DRAWING SHALL NOT BE SCALED.



3 NORTH ELEVATION
 SCALE 3/32" = 1'-0"

- LEGEND:**
- METAL CLADDING COLOUR / PROFILE 1
 - METAL CLADDING COLOUR 1 / PROFILE 2
 - METAL CLADDING COLOUR 2 / PROFILE 2
 - METAL CLADDING COLOUR / PROFILE 3

- EXTERIOR ELEVATION NOTES:**
- 1 PREFINISHED METAL PARAPET CAP FLASHING. COLOUR TO MATCH ADJACENT FINISH BELOW.
 - 2 REFER TO DOOR AND DOOR HARDWARE SCHEDULES FOR DOOR, DOOR FRAME AND DOOR HARDWARE INFORMATION. PAINT DOOR AND DOOR FRAME TO MATCH ADJACENT METAL PANEL COLOUR.
 - 3 S.T.A.R. SYSTEM ALUMINUM RAILING SYSTEM CW TEMPERED GLASS PANELS (TYPICAL).
 - 4 SUITE MECHANICAL CONDENSING UNIT. REFER TO MECHANICAL (TYPICAL).
 - 5 EXTERIOR BALCONY LIGHTING. REFER TO ELECTRICAL (TYPICAL).
 - 6 BALCONY BUILD-OUT. REFER TO DETAIL B/A3.1.
 - 7 OVERFLOW SCUPPER. REFER TO ROOF PLANS AND SECTION DETAILS.
 - 8 SIGNAGE. REFER TO DETAIL A/A3.1.
 - 9 SPANDREL PANEL COLOUR TO MATCH WINDOW FRAME. REFER TO WINDOW SCHEDULE AND SPECIFICATIONS.
 - 10 MECHANICAL VENT COVER. SEE DETAIL S/A14.12.



4 WEST ELEVATION
 SCALE 3/32" = 1'-0"

SCHEDULE "A" page 4 of 5
 To Zoning Agreement DAV 21-195338
 By-Law No. _____
 ZONING OFFICER _____
 DISTRICT PLANNING _____
 COMMUNITY OFFICER _____
 APPROVED FOR THE DIRECTOR OF PLANNING PROPERTY & DEVELOPMENT _____
 Date: 12.15.2022
12/21/2022
Dec 21/22
Dec 21, 2022

Revisions

Date	Revision

INH
 K. H. SAWATZKY & ASSOCIATES
 STRUCTURAL ENGINEERING CONSULTANTS

Northern Sky Architecture Inc.

100-128 James Avenue
 Winnipeg, Manitoba, Canada
 R3B 0H6
 204-588-7999
 204-943-6767

Stamp

Project: Foresight Development Group Inc.

The Mission

Winnipeg, Manitoba

drawing title: EXTERIOR ELEVATIONS

scale:	as noted	designed by:	jjs
date:		drawn by:	bev
project no.:	21.271	reviewed by:	dko
reference no.:		sheet:	A3.2
		REV:	

***Please note: Approved plans are subject to any amendments or conditions made by Community Committee.**

420 CHRISLIND: THE MISSION



WEST ELEVATION



SOUTH ELEVATION

CONCEPT PLAN page 5 of 5	
To Zoning Agreement	DAV 21-195338
By-Law No.	
ZONING OFFICER	ay 12.15.2022
DISTRICT PLANNER	obs 12/15/2021
COMMUNITY CLERK	[Signature] Dec 21/22
APPROVED FOR THE DIRECTOR OF PLANNING PROPERTY & DEVELOPMENT	[Signature] Dec 21, 2022



EAST ELEVATION



NORTH ELEVATION